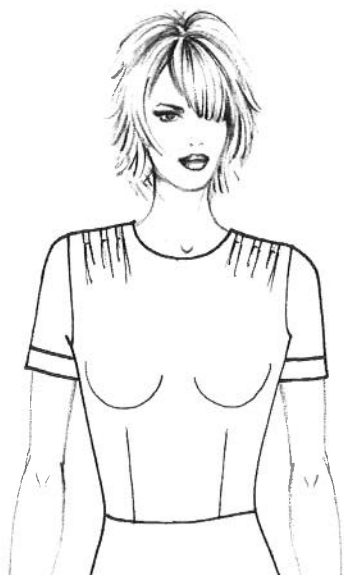


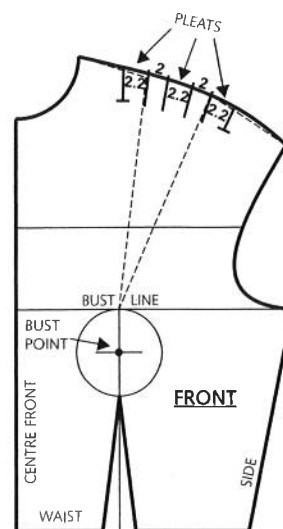
## 8. Bustesucon verplaatsen

## SHIFTING THE SHOULDER DART

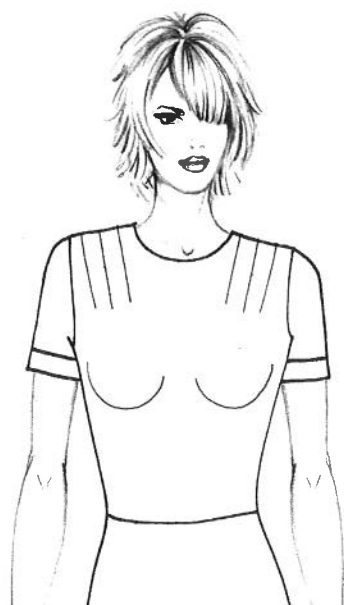
DART TRANSFORMED INTO THREE GATHERS



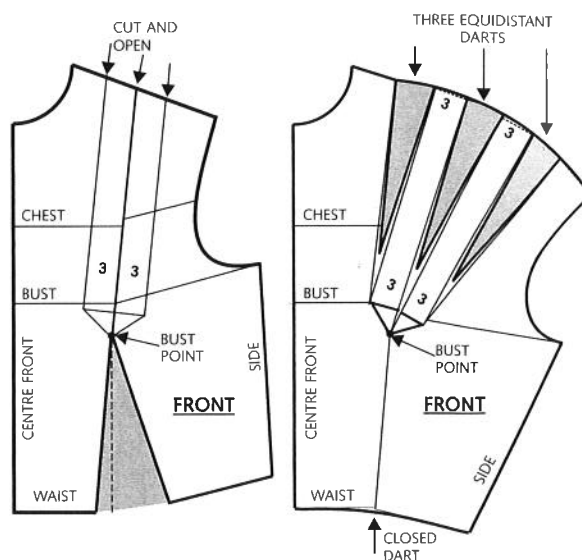
- Draw the basic bodice.
- Divide the dart width into three sections, leaving a 2–2.5 cm space between one section and the other.
- Draw lines from the points just drawn, converging on the dart tip.
- Finish the shoulder with a curved line.



## WAIST DART MERGED IN THE SHOULDER AND DIVIDED IN THREE



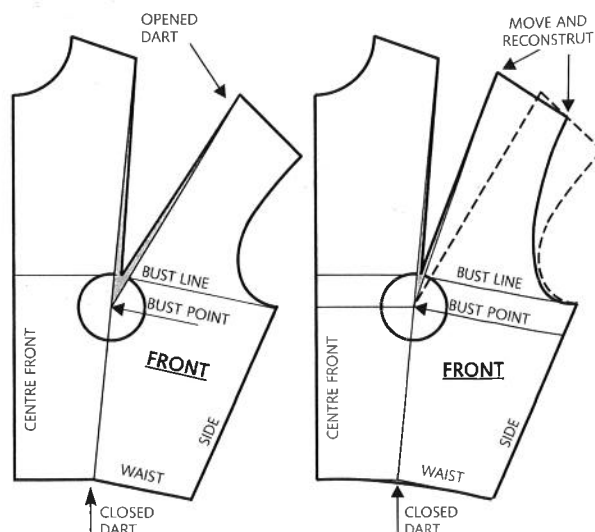
- Draw the basic bodice.
- Move the tip of the shoulder dart to the bust point.
- Momentarily close the shoulder dart, opening the one at the waist.
- Draw three equidistant lines parallel to the closed shoulder dart line, as shown in the figure.
- Cut along these lines and reopen, subdividing the opening in three equal parts, matching the sides of the waist dart.
- Smoothly join the waistline and the shoulder line.



## WAIST DART MERGED IN THE SHOULDER AND SUPPRESSED IN THE NECKLINE

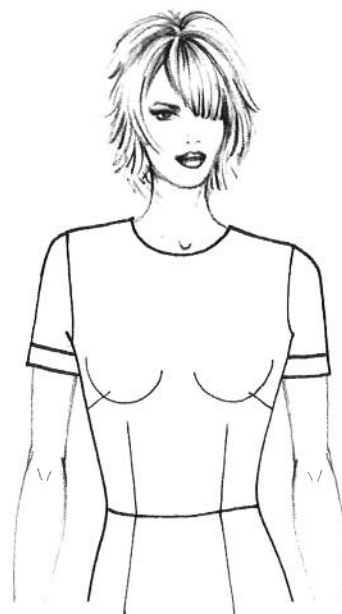
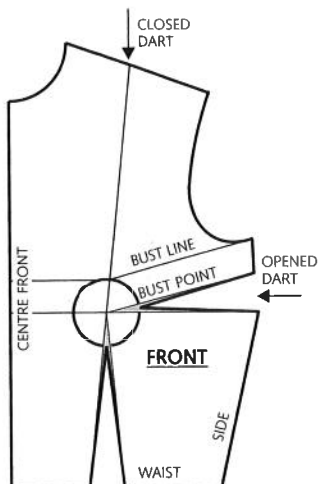


- Draw the basic bodice.
- Move the tip of the shoulder dart to the bust centre.
- Slash and pivot the area of the pattern enclosed by the two darts until the two sides of the waist dart match, at the same time opening up the one on the shoulder.
- Copy the shoulder dart in its original position and reconstruct the shoulder and the armscye.

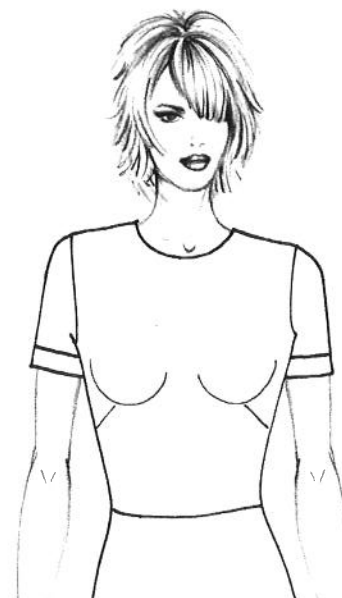
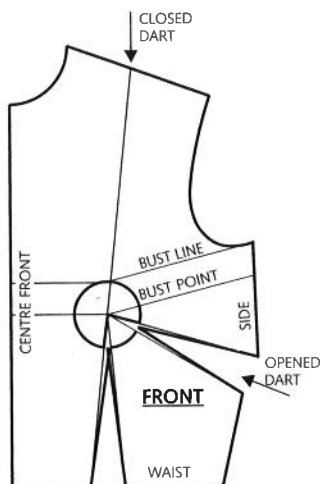


## SHIFT THE DART TO THE SIDE SEAM

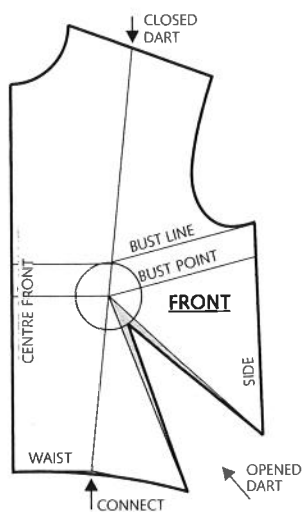
### BUST DART MERGED INTO THE TOP OF THE SIDE



### BUST DART MERGED MID-SIDE



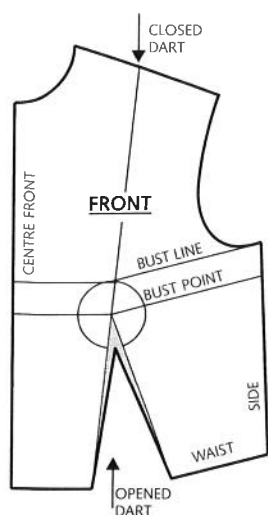
### BUST AND WAIST DARTS MERGED INTO THE LOWER SIDE



- Draw the basic bodice.
- Move the tip of the dart to the bust point.
- Draw the new dart line from the bust point to the side line at the desired height.
- Slash along the drawn lines and pivot the entire pattern piece contained between the two slashes until the two

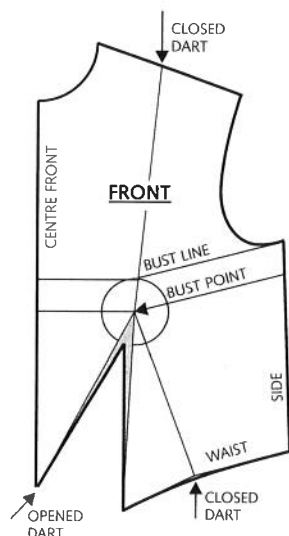
- sides of the shoulder dart meet, at the same time opening the new dart on the side.
- Fasten the edges of the closed dart with paste or tape.
- Shift the vertex of the new dart to the edge of the circle guide, about 4 cm from the bust point.

## MOVING DARTS TO THE WAIST



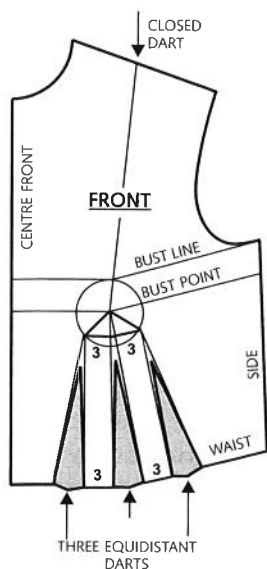
### BUST DART MOVED TO THE WAIST

- Draw the basic bodice.
- Move the tip of the shoulder dart to the bust centre.
- Draw the new dart line from the bust centre to the waistline at the desired position.
- Slash along the drawn lines and pivot the entire pattern piece contained between the two slashes until the two sides of the shoulder dart meet, at the same time opening the new dart on the waistline.
- Fasten the edges of the closed dart with paste or tape.
- Shift the vertex of the new dart to the edge of the circle guide, about 4 cm from the bust point.



### BUST DART MERGED IN THE WAIST DART, SHIFTED TO THE CENTRE FRONT

- Draw the basic bodice.
- Move the tip of the shoulder dart to the bust centre.
- Draw the new dart line from the bust point to the waistline where it intersect with the one on the centre front.
- Slash along the drawn lines and pivot the entire pattern piece contained between the two slashes until the two sides of the shoulder dart meet, at the same time opening the new dart on the waist.
- Merge the original waist dart into the new dart.
- Fasten the edges of the closed dart with paste or tape.
- Shift the vertex of the new dart to the edge of the circle guide, about 4 cm from the bust point.

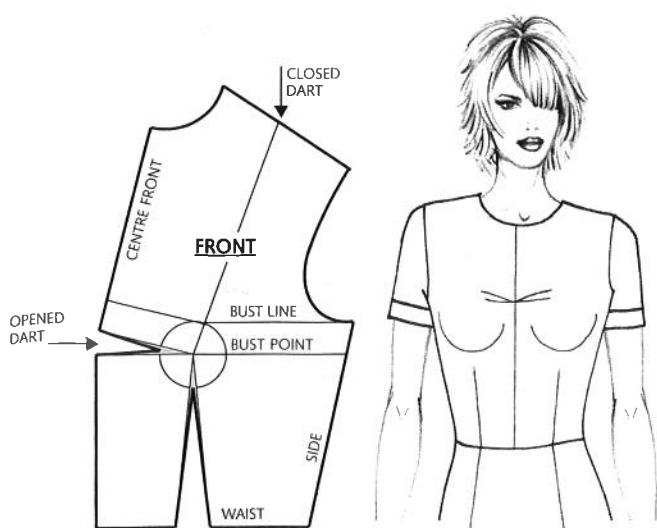


### BUST DART MERGED IN THE WAIST, DIVIDED BETWEEN THREE DARTS

- Draw the basic bodice.
- Move the tip of the shoulder dart to the bust centre.
- Momentarily close the waist dart, opening the one on the shoulder.
- Draw three equidistant lines parallel to the closed waist dart line, as shown in the figure.
- Slash along these lines and reopen them, dividing the opening in three equal parts, until the two sides of the shoulder dart meet.
- Carefully finish the waist and shoulder lines.

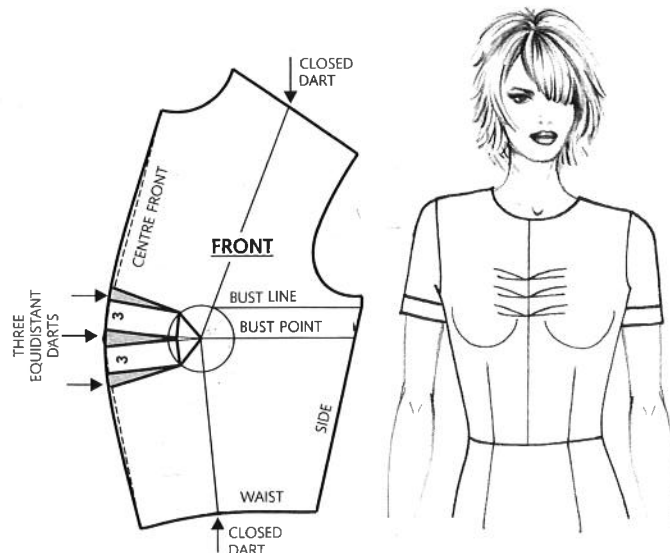


## SHIFTING DART TO THE CENTRE FRONT



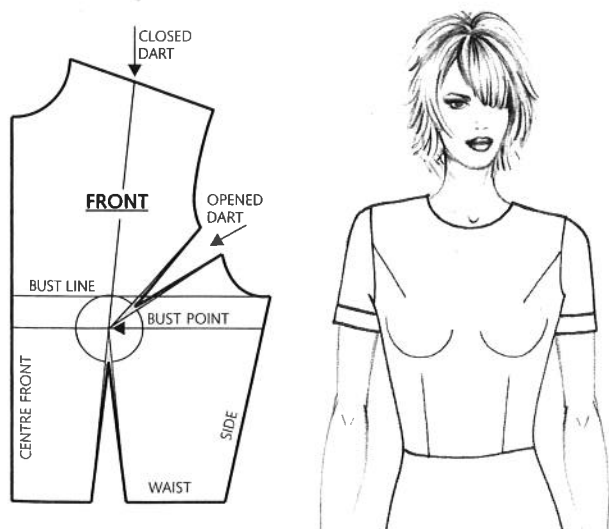
- Draw the basic bodice.
- Move the tip of the shoulder dart to the bust centre.
- Draw the new dart line from the bust centre to the centre front at the desired position.
- Slash along the drawn lines and pivot the entire pattern piece contained between the two slashes until the two sides of the shoulder dart meet.

Three darts on the centre front

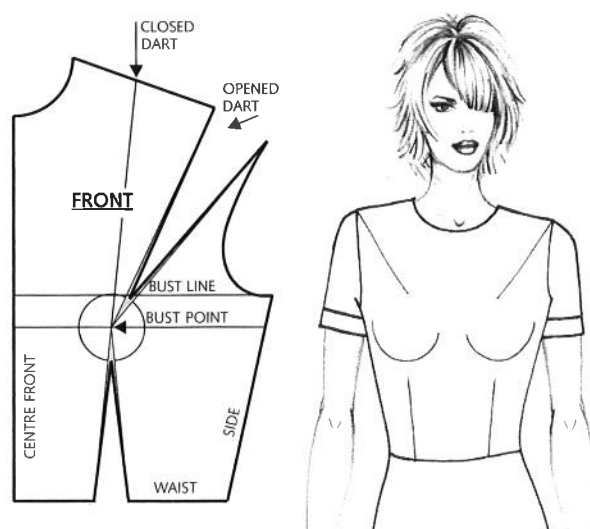


- After drawing the line of the new dart from the bust point to the centre front, draw three equidistant lines parallel to this one, as far as the circle guide.
- Slash along these lines and open them, dividing the opening in three equal parts, until the two sides of the shoulder dart and those of the waist dart meet.
- Carefully finish the waist and centre front lines.

## SHIFTING THE DART TO THE ARMSYCE



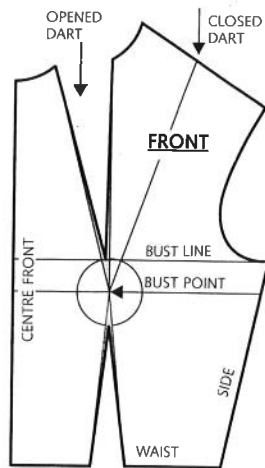
- Draw the basic bodice.
- Move the tip of the dart to the bust centre.
- Draw the new dart line from the bust centre to the underarm line at the desired position.
- Slash along the drawn lines and pivot the entire pattern piece contained between the two slashes until the two sides of the



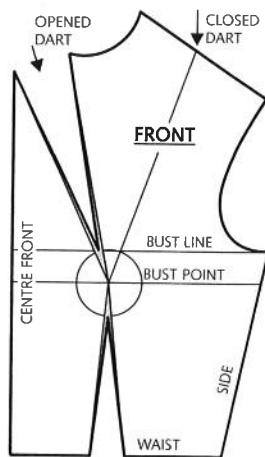
- shoulder dart meet, at the same time opening the new dart on the armscye.
- Fasten the edges of the closed dart with paste or tape.
- Shift the vertex of the new dart to the edge of the circle guide, about 4 cm from the bust point.

## SHIFTING THE DART TO THE NECKLINE

### BUST DART MERGED WITH THE MID-NECKLINE



### BUST DART MERGED WITH THE CENTRE NECKLINE

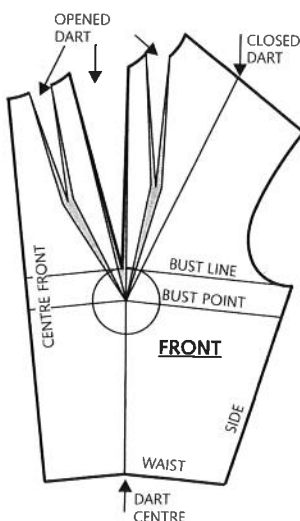


- Draw the basic bodice.
- Move the tip of the shoulder dart to the bust point.
- Draw the new darts line from the bust centre to the neckline line at the desired position.
- Slash along the drawn lines and pivot the entire pattern piece contained between the two slashes until the two sides

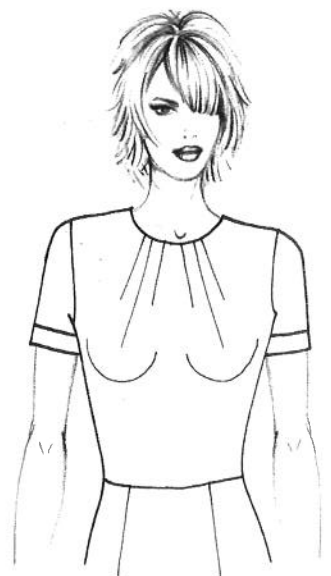
of the shoulder dart meet, at the same time opening up the new dart on the neckline.

- Fasten the edges of the closed dart with paste or tape.
- Shift the vertex of the new dart to the edge of the circle guide, about 4 cm from the bust point.

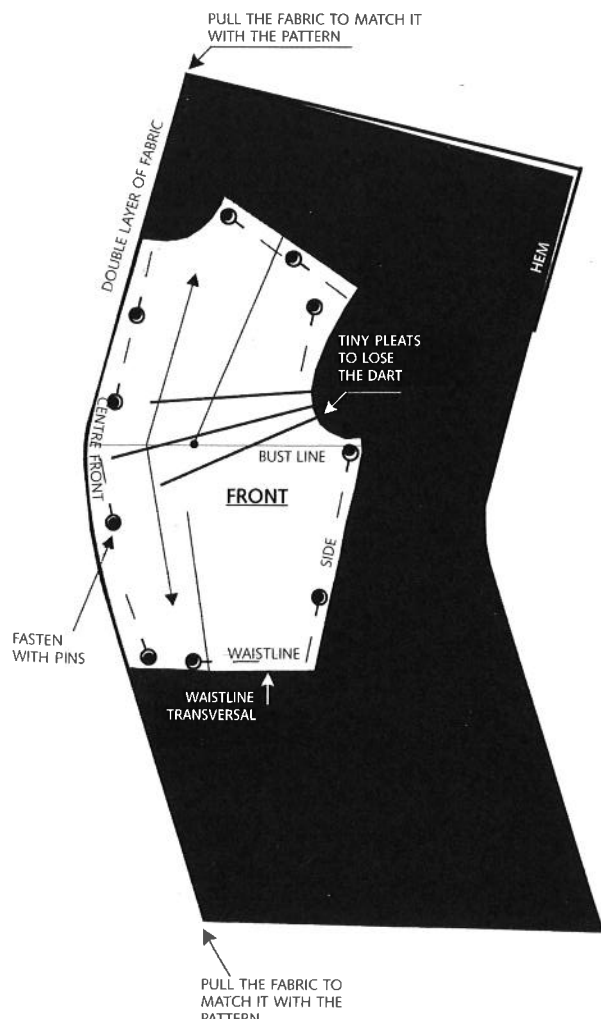
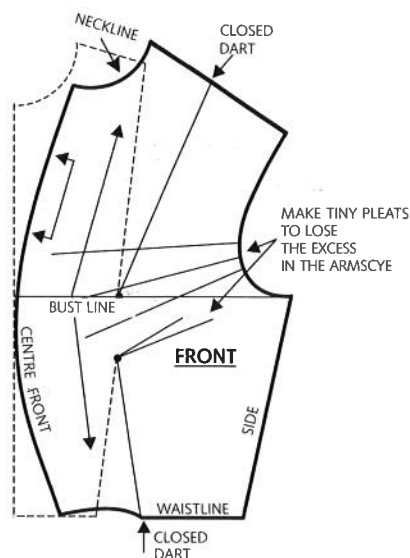
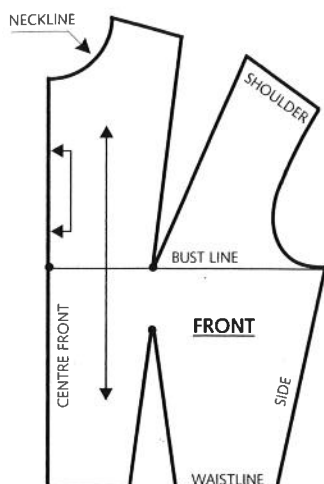
### BUST DART MERGED IN THE NECKLINE AND DIVIDED IN THREE



- After moving the shoulder dart to the centre of the neckline, as described above, draw two more lines from the bust point to the neckline between the two sides of the shifted dart and the two sides of the neckline.
- Slash along these lines and the waist dart lines and pivot the pattern pieces until the two sides of the waist dart meet at its centre, as shown in the figure.



## SHAPING THE FRONT WITHOUT DARTS



The whole front of a bodice or a dress can be shaped using an empirical system, eliminating unattractive darts. This is only possible with soft, lightweight fabrics and proceed as follows:

- Draw the basic bodice or dress with darts on soft tissue paper.
- Close the bust and waist darts losing the excess in the armseye, making tiny pleats and applying tape to the closed darts.
- The pattern thus obtained is laid out on a double layer of fabric, with the centre front edge on the fold, fastening it with straight pins.
- After cutting the fabric, it will take the desired form, including the difference usually obtained by making the darts.

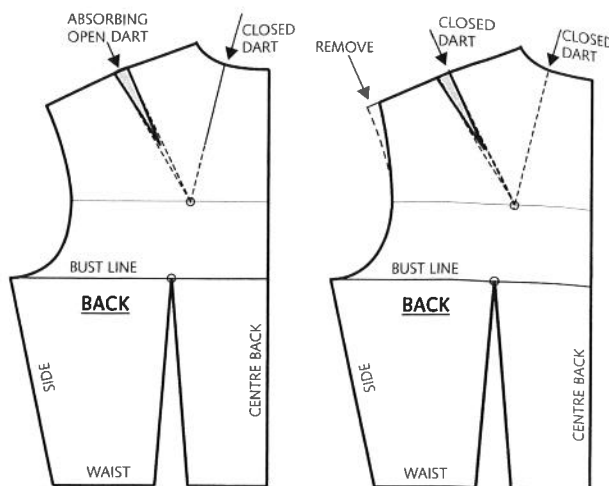
This procedure is designed only for *haute couture* dresses, especially if the fabric is striped, floral, or with precious appliqués, to avoid unattractive darts, usually inevitable and indispensable for fitting the dress to the figure.

## MOVING THE BACK DARTS

### NECKLINE DART MOVED TO THE CENTRE SHOULDER



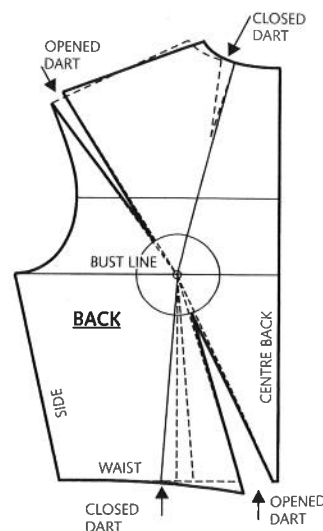
The back neckline dart must be removed when possible, as it is unattractive. It can be eliminated in the following ways:  
 1) By merging the dart in the centre back, if there is a cut or a zipper or a fastening.  
 2) By moving the dart to the shoulder line, and thus allowing the dart width to be absorbed in the assembly of the shoulders.  
 3) By removing the dart to the armhole, after having shifted it to the shoulder line.



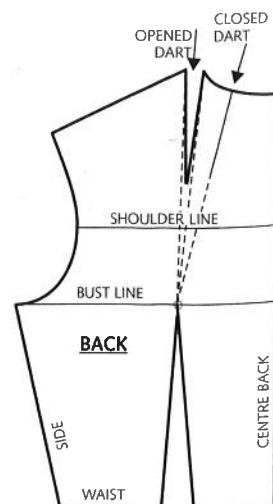
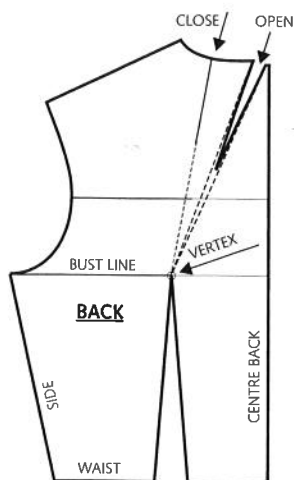
### NECKLINE DART ON THE OUTER SHOULDER POINT AND WAIST DART SHIFTED TO THE CENTRE BACK



- Extend the side of the neckline dart to where it converges with the tip of the waist dart, on the bust line.
- Draw the line for the new dart in the position desired, on the outer shoulder point.
- Draw the line for the new waist dart shifted to the centre back.
- Slash and pivot the pattern pieces to close the previous dart and open the new one.
- Carefully finish the lines.



### NECK DART MOVED TO CENTRE BACK AND THE SHOULDER POINT





## FANCY ASYMMETRICAL DARTS

